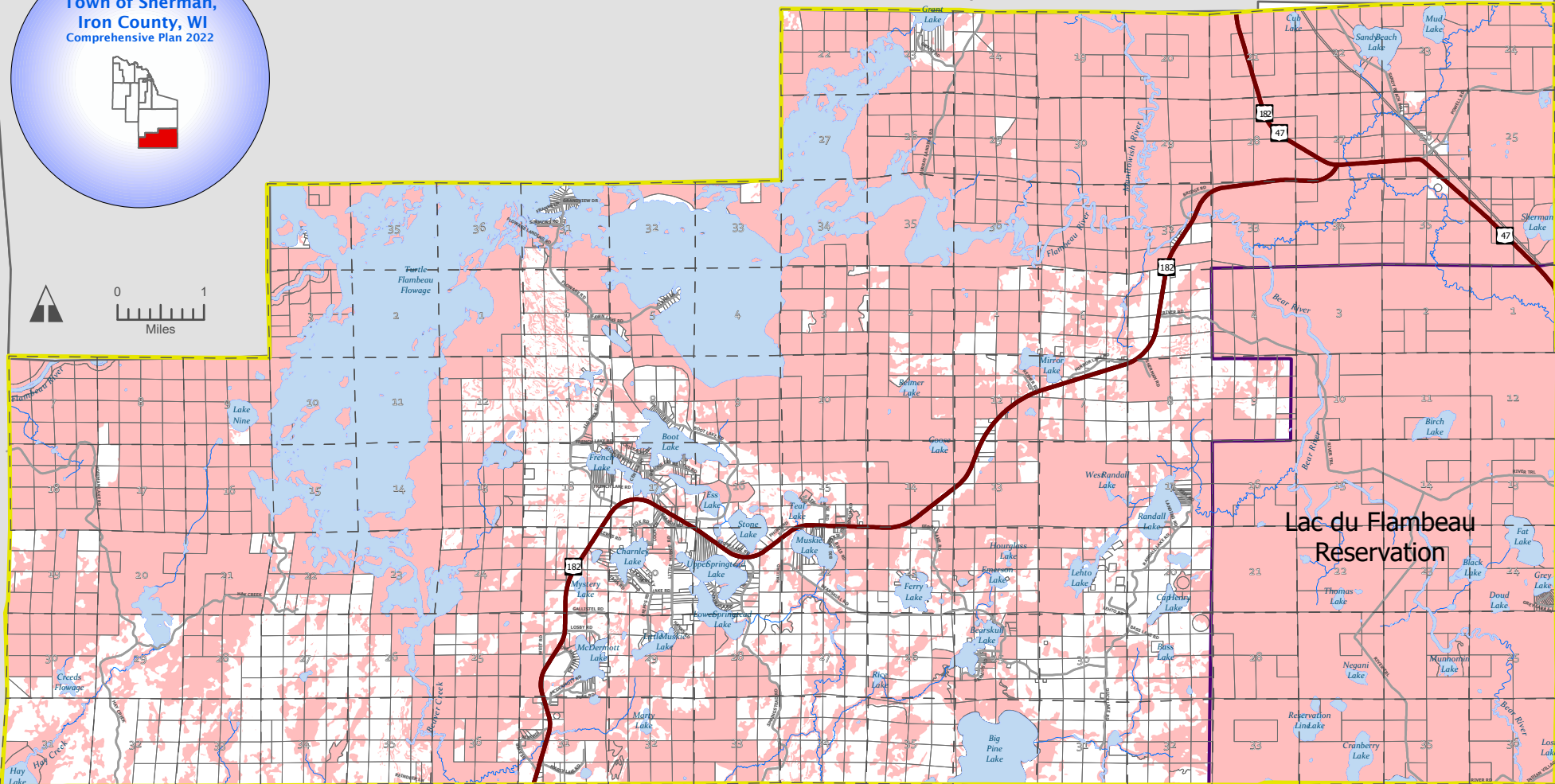


Town of Mercer, Iron County

Town of Manitowish Waters, Vilas County

Town of Agenda, Ashland County



Town of Eisenstein, Price County

Town of Fifield, Price County

Town of Lac du Flambeau, Vilas County

Lac du Flambeau Reservation

Map 8.3-Combined Constraints

- Land with Development Constraints
- State Highway
- Local Road
- River/Stream/Creek
- Lake/Large River/Flowage
- Tax Parcels
- Town Boundary

